

# Welcome home...

Mid-way between Phoenix the dusty railroad town and Phoenix the vast paved suburb there was a heavenly oasis in the middle of the desert. Mid-century homes in the middle of town, with cool, quiet tree-lined streets and shady front porches where neighbors could get together over iced-tea.

Welcome back to that Phoenix. A big ranch home on a big lot, perfect for entertaining. A stately hearth, a refreshing pool – a simpler, better life...

More info, a floorplan and many more photos at [www.1322EastVermontAve.com](http://www.1322EastVermontAve.com)

**Offered at \$400,000.** Call Greg Swann at 602-740-7531 for a showing appointment.

Our homes are structures, shelters, domiciles. But the idea of a residence encompasses so much more than mere tentage – mere respite from heat and cold and wind and rain and the relentless summer sun. If all we needed was a place to escape the elements, we might just as well live in insulated barns.

But your home – your residence – is much more than that. It's love and marriage and family, of course, home and hearth, kith and kin. But at a more fundamental level it is a *reflection* of who you are, an enduring stake stuck into the earth that declares to all: *This is who we are, this is what we believe in and stand for and cherish.*

This is not *where* we live, not *how* we live. This structure, this shelter, this domicile – this home – *is* our lives, as much an essential part of what we are as our heads, our hands, our hearts.

Home is where the heart is? A home like this is the beating heart of lives lived wisely and well.



*A classic Phoenix ranch home, spacious and luxurious...*



*This is an eminently livable home, but it's also perfect for entertaining. The common spaces are vast and open, and the pool and patio could host dozens of guests. This is North Central Phoenix at its best – a huge, shady irrigated lot. Plus, you're right in the heart of everything: Seconds from the SR-51 Freeway, minutes from Downtown and the airport. Even so, you'll be nestled in a cocoon of suburban bliss amidst all that bustling urbanity. Beauty, history and city life, all in your unique new home...*

*For more information, call Greg Swann at*



*The roomy kitchen is the heart of this home...*



*Charming mid-century details abound throughout the home...*

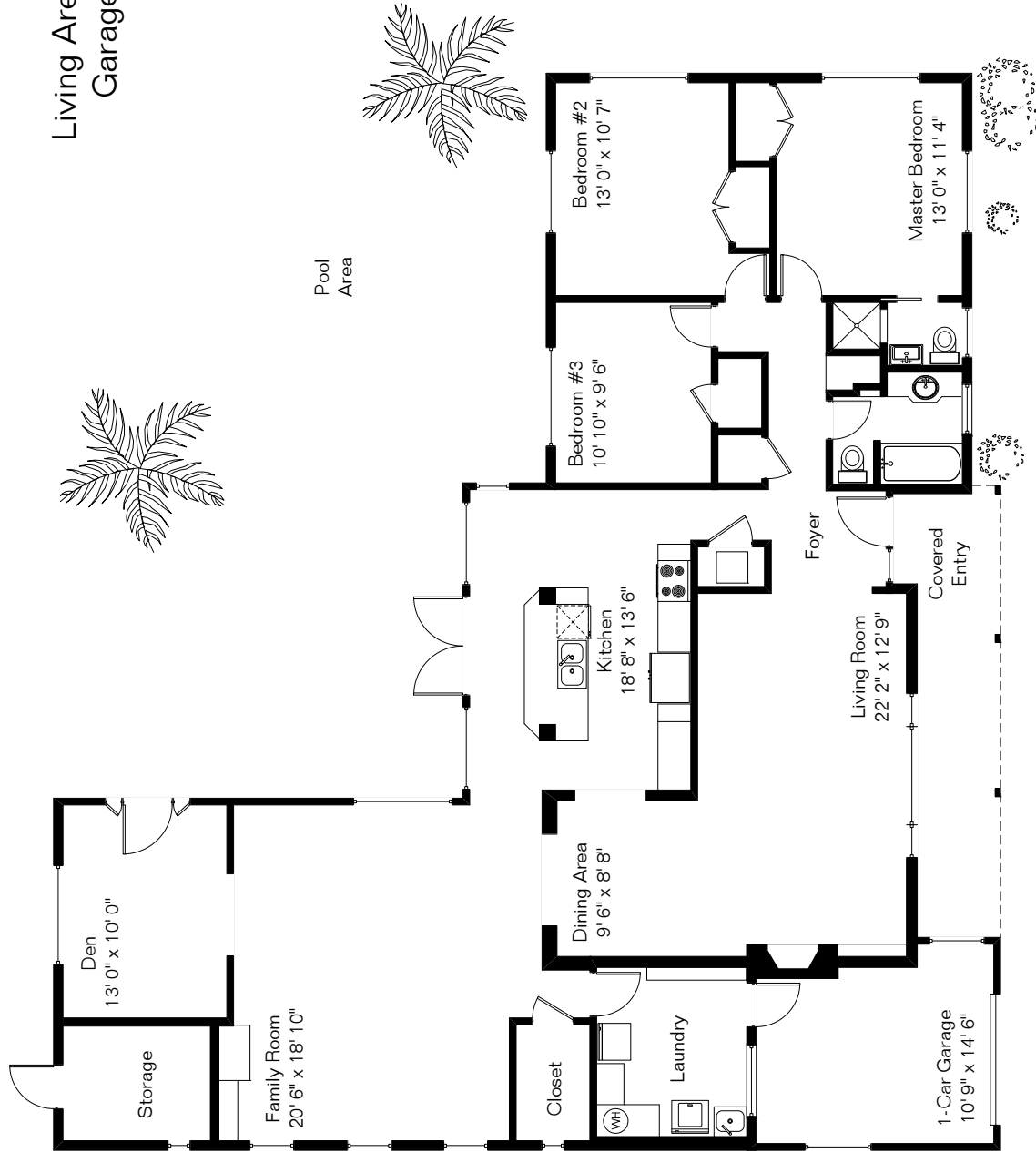


**Bloodhound**  
REALTY.COM  
[www.BloodhoundRealty.com](http://www.BloodhoundRealty.com)  
**602-740-7531**

The square footages and room size information are deemed to be reliable but are not guaranteed and should be independently verified.

# 1322 E Vermont Ave

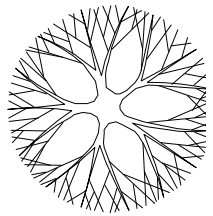
Presented by BloodhoundRealty.com  
(602) 369-9275



Living Area 2,130 Sq Ft  
Garage 173 Sq Ft

***Put your furniture right where you want it!***  
*An interactive version of this floorplan can be found on this home's custom web site:*  
***www.1322EastVermontAve.com***

Site Visit March 2008



Copyright 2008 Floor Plans First! LLC  
All Rights Reserved.