

# *Luxury, elegance, simplicity...*

Welcome to 2001 East Marshall Avenue, a practical paradise all your own...

True luxury, true elegance is not a vast accumulation of shiny trinkets, a mass of dazzling distractions. The artifacts of genuine wealth are streamlined, refined, stripped down to the essence. Simple. Unaffected. The best expression of your limit-less lifestyle is a home that serves as the jewelry box for the precious treasure that is your family...

We're so sure you're going to love this home that BloodhoundRealty.com will pay for your first year home warranty plan with pool and appliance coverage. More info, an interactive floorplan and many more photos at <http://2001EastMarshallAve.com/>

Call Greg Swann at **602-740-7531** for a showing appointment.

Our homes are structures, shelters, domiciles. But the idea of a residence encompasses so much more than mere tentage – mere respite from heat and cold and wind and rain and the relentless summer sun. If all we needed was a place to escape the elements, we might just as well live in insulated barns.

But your home – your residence – is much more than that. It's love and marriage and family, of course, home and hearth, kith and kin. But at a more fundamental level it is a *reflection* of who you are, an enduring stake stuck into the earth that declares to all: *This is who we are, this is what we believe in and stand for and cherish.*

This is not *where* we live, not *how* we live. This structure, this shelter, this domicile – this home – *is* our lives, as much an essential part of what we are as our heads, our hands, our hearts.

Home is where the heart is? A home like this is the beating heart of lives lived wisely and well.



*Spacious luxury on the inside, a stately serenity from the curb...*



*Large and bright, this home makes space for all your treasures...*



*Luxurious details abound throughout the home...*



*This is an eminently livable home, but it's also perfect for entertaining. The common spaces are vast and open, and the patio and back yard could host dozens of guests. This is Phoenix at its best – a resort-like redoubt against the hurly-burly of modern life. And yet you're right in the heart of everything, with the SR-51 and I-10 freeways just a short hop away. Scottsdale and Downtown Phoenix are both easy commutes, and you're just 10 quick minutes away from the airport...*

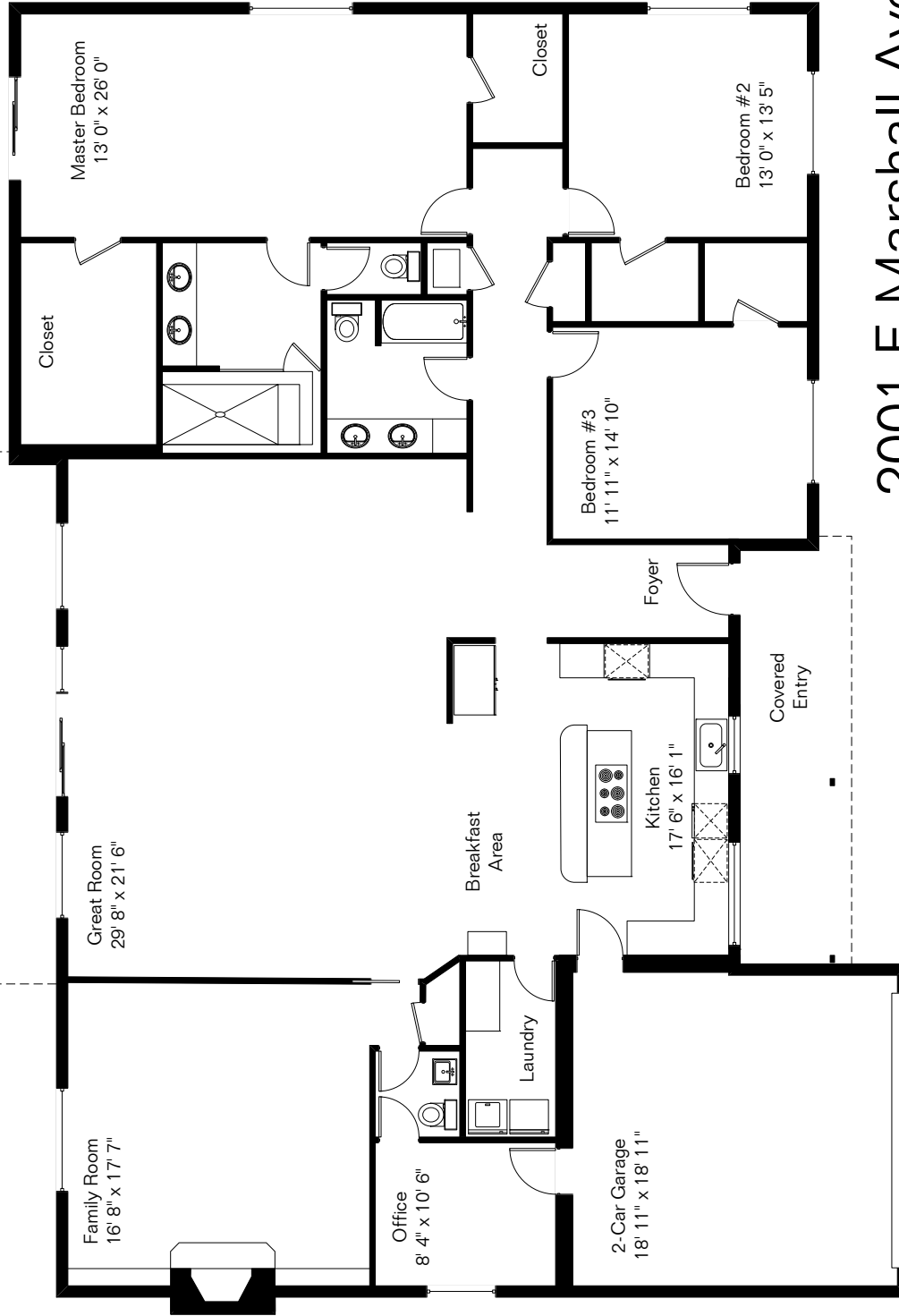
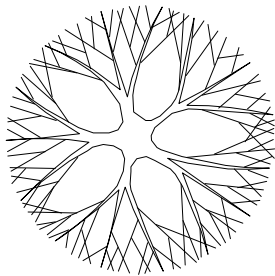
*For more information, call Greg Swann at*



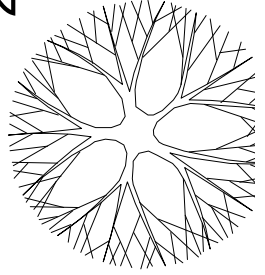
**Bloodhound**  
REALTY.COM  
[www.BloodhoundRealty.com](http://www.BloodhoundRealty.com)  
**602-740-7531**

The square footages and room size information are deemed to be reliable but are not guaranteed and should be independently verified.

Living Area 3,040 Sq Ft  
Garage 375 Sq Ft



2001 E Marshall Ave



***Put your furniture right where you want it!***  
*An interactive version of this floorplan can be found on this home's custom web site:*  
***<http://2001EastMarshallAve.com>***

Site Visit February 2010



Copyright 2010 Floor Plans First! LLC  
All Rights Reserved.